

Celebrating the very best of  
art, craft & design education



# NSEAD Awards Entry Kit 2026



# Contents

Page 3	About the awards
Page 4	Why enter?
Page 5	How to enter
Page 7	Entry criteria
Page 8	Award categories
Pages 9 – 10	Rules and eligibility
Page 11	President's Award for exemplary practice
Page 12	The Big Landscape Award for innovative curriculum design
Page 13	Patron's Empowering Change Award
Page 14	Learning Innovations Award
Page 15	Rising Star Award
Page 16	Workplace Champion Award



# About the awards

Celebrating the very best of art, craft and design education

Since 1888, the NSEAD professional learning community has been at the forefront of advancing better practice in art, craft and design education. The NSEAD Awards shine a spotlight on the remarkable work of our members across the United Kingdom, celebrating their dedication, creativity and impact.

These awards recognise individuals, schools and organisations who have championed our subject, challenged boundaries, inspired change and demonstrated innovation within the sector.

Let's raise the profile of our community, our subject and its learners, together.

## Key dates:

<b>3 November 2025</b>	<b>Open for nominations</b>
<b>27 March 2026</b>	<b>Nominations deadline</b>
<b>18 May 2026</b>	<b>Shortlist announced</b>



# Why enter?



**There are so many reasons to put yourself, a colleague or your school forward for an NSEAD Award, such as:**

To give you public recognition that you or your school are leaders in art and design education

To help you to develop as a professional and give you confidence in your knowledge and skills

To provide our community with concrete, relatable and practical examples of better practice

To open up networking opportunities that take you in new directions

To strengthen our professional learning community and the profile of our subject

## **In a poll of members:**

100%

of respondents said that it's important to see examples of best practice in art education

71%

of respondents said they know a person, group or organisation that deserves recognition for inspirational practice

96%

of respondents said that winning an award would benefit their professional practice



# How to enter

## There are two ways to enter the awards

### Nominate yourself

While it might feel unusual to highlight your own achievements, sharing your work helps showcase the impact of our subject and raises the profile of our community and its learners. Our community is full of exceptional educators whose contributions deserve recognition. By putting yourself forward, you're celebrating not just your own work, but the strength and excellence of us all.

#### Step One

[Fill out the self-nomination form](#)

#### Step Two

Send supporting documentation to [events@nsead.org](mailto:events@nsead.org)

### Nominate someone else

The aim is to recognise exceptional educators whose work deserves to be celebrated and shared with the wider community. You may want to nominate a member of your team or an individual from the wider NSEAD community. By nominating someone else, you are helping to showcase the impact of their work, raise the profile of our subject, and celebrate the collective strength and excellence of our teaching community.

#### Step One

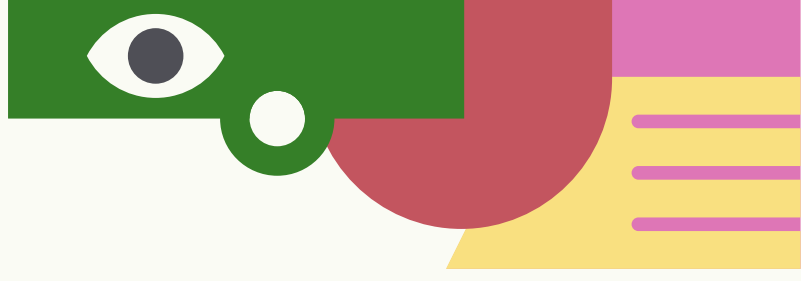
[Fill out the nomination form](#)

#### Step Two

Send supporting documentation to [events@nsead.org](mailto:events@nsead.org)

#### Step Three

The nominee is informed they have been nominated and given the opportunity to add their own information to the nomination for the judges.



Winning the award is an incredible honour, and it feels deeply affirming. I've always been passionate about art education, and this recognition reinforces that the work I have done in school is making a meaningful impact. It's not just a personal achievement but a testament to the entire community, from the pupils and their families to the local artists who've supported us. Knowing that this project has reached beyond our school, connecting pupils across the UK and even globally, is incredibly rewarding. This award reflects the importance of giving children access to high-quality, creative resources, and that's what drives me every day.

- Amy Mulvenna

**Learning Innovations Award Winner 2024**





# Entry criteria

## **What is it that makes your nominee stand out as a potential award winner?**

We want to hear about the difference that nominees have made to learners, colleagues and the wider community. Their work may have impact on a local, national or international scale.

How are they leading better practice in our subject?

We ask you to provide real examples of the inspirational practice that enthuses, engages and motivates learners and colleagues.

## **Your nomination**

Our judges want to see clear evidence of the impact that the nominee has made on art, craft and design education.

We recommend you write a maximum of **1,000 words** ensuring you address the following key points:

### **Intention and implementation**

What did they want to achieve, and what have been the ingredients of their success? Tell us about aspirational intentions for their learners, and their innovative approaches to teaching and learning in our subject.

### **Impact**

What difference have they made? How has your nominee enriched the education, outcomes and lives of their learners and inspired colleagues to do the same? Tell us about the tangible difference they have made.

# Award categories

---

## **President's Award for exemplary practice**

This award is for an individual, department or organisation who demonstrates exemplary practice and a commitment to leadership in art, craft and design education.

---

## **Patron's Empowering Change Award**

This award is for an individual, department or organisation who, through their work and projects, displays a clear intentional commitment over an extended period, to empowering change.

---

## **Rising Star Award**

This award celebrates art educators in the early stages of their careers who are already shaping and inspiring their communities through their practice.

The criteria for each award category can be found from page 11 onwards. When submitting a nomination, you may indicate which category you believe best fits your nominee.

Once all nominations have been received, the NSEAD team will review and allocate them to the most relevant categories.

## **The Big Landscape Award for innovative curriculum design**

This award is for an individual, department or organisation who challenges orthodoxies and supports the expansiveness of the subject.

---

## **Learning Innovations Award**

This award is for an individual, department or organisation who is working in innovative ways, in and beyond the classroom/studio.

---

## **Workplace Champion Award**

This award celebrates an individual who demonstrates exceptional advocacy, support, and leadership within their workplace.





# Rules and eligibility

The awards are open to all active NSEAD members including anyone working in early years settings, schools, MATs, trusts, partnerships, FE colleges, artist educators and museum and gallery learning teams.

An 'entry' is the completion and submission of an 'NSEAD Awards nomination form'.

An entry can be completed and submitted by the individual nominee themselves, a colleague, a senior member of the school or organisation, or an external stakeholder working closely with the nominee.

If you are entering on behalf of a school or organisation, the senior leadership team must be aware of and approve the entry.

If your entry includes materials that were produced collaboratively with an organisation or individual not involved in the award entry, you must provide written evidence that you have permission from the collaborator to use these materials as supporting evidence.

Entrants can be working in state-maintained or independent establishments in either England, Northern Ireland, Scotland or Wales.

If the entry is related to a specific project or piece of work, it must have been completed during the current or previous academic year.

This entry must not include or jeopardise work that is still being assessed.

# Rules and eligibility

*continued...*

An entrant can self-nominate.

NSEAD has the right to withdraw an entry if the supporting evidence is found to be false.

NSEAD shall be permitted to exclude any entrant at any time at its sole discretion.

The closing time and date for entries is **18:00 on 27 March 2026**. All entries must be received by this time and date to be included. Entries received after the closing date will not be accepted, nor will any that are incomplete on this date.

Entries are only accepted via the NSEAD Awards nomination forms.

All materials submitted, including images and films, may be used by NSEAD to produce publicity material for the awards programme. Materials will always be credited and may be shared including but not exclusively on the NSEAD website, in NSEAD publications and across NSEAD social media channels.

By submitting an entry, it is deemed as acceptance of these rules and agreement to be bound by them.

# President's Award for exemplary practice

## **This award is for**

An individual, department or organisation that displays exemplary practice and a commitment to leadership in art, craft and design education.

The successful nominee will demonstrate that they have made a difference to students, colleagues, the school and wider community, regionally, nationally or even internationally.

## **Who can enter?**

The awards are open to all active NSEAD members including anyone working in early years settings, schools, MATs, trusts, partnerships, FE colleges, artist educators and museum & gallery learning teams.

## **The judges are especially looking for evidence of:**

- Examples of high quality, inspirational approaches to teaching and learning
- Opportunities opened up for learners as a result of their approach
- Ingenuity, innovation, determination to make a difference in and through our subject



# The Big Landscape Award for innovative curriculum design

## **This award is for**

An individual, department or organisation that represents exemplary practice and a commitment to leadership in art, craft and design education.

The successful nominee will demonstrate practice that challenges orthodoxy with a confident, innovative art, craft and design curriculum.

## **Who can enter?**

The awards are open to all active NSEAD members including anyone working in early years settings, schools, MATs, trusts, partnerships, FE colleges, artist educators and museum & gallery learning teams.

## **The judges are especially looking for evidence of:**

- Curriculum design that is driven by values, department ethos, local context and the needs of the learner
- A coherent plan for learning with a richness of critical and contextual opportunities
- Confidence, originality and aspiration



# Patron's Empowering Change Award

## **This award is for**

An individual, department or organisation who, through their work and projects, displays a clear intentional commitment over an extended period to empowering change.

The successful nominee will demonstrate practice that makes a clear and tangible difference to the education and outcomes of their learners.

## **Who can enter?**

The awards are open to all active NSEAD members including anyone working in early years settings, schools, MATs, trusts, partnerships, FE colleges, artist educators and museum & gallery learning teams.

## **The judges are especially looking for evidence of:**

- Tangible examples of the difference made
- Practice that has supported and influenced colleagues, and inspired them to make change
- Support, inspiration, impact



# Learning Innovations Award

## **This award is for**

An individual, department or organisation who is working in innovative ways in and beyond the classroom/studio.

The successful nominee will demonstrate original and creative approaches to teaching and learning.

## **Who can enter?**

The awards are open to all active NSEAD members including anyone working in early years settings, schools, MATs, trusts, partnerships, FE colleges, artist educators and museum & gallery learning teams.

## **The judges are especially looking for evidence of:**

- Successful introduction of unique approaches that have not been seen in the school or setting before
- Compelling learning experiences that spark engagement and motivate learners
- Creativity, originality, inspiration



# Rising Star Award

## **This award is to**

Recognise the art educators of the future who are already making a difference in their environments and communities.

The successful nominee will demonstrate that they have made an exceptional contribution at the very start of their teaching career.

## **Who can enter?**

This award is open to all active NSEAD members who are early in their career. Including anyone working in early years settings, schools, MATs, trusts, partnerships, FE colleges, artist educators and museum & gallery learning teams.

## **The judges are especially looking for evidence of:**

- Bringing fresh perspectives and innovative ideas to their practice, inspiring creativity and connection
- Experience from beyond the classroom that enriches teaching and learning
- Dedication, focus, flair



# Workplace Champion Award

## **This award celebrates**

An individual who demonstrates exceptional advocacy, support, and leadership within their workplace.

The successful nominee will demonstrate that they have made a positive and lasting difference to their colleagues, workplace culture, or wider professional environment.

## **Who can enter?**

The awards are open to all active NSEAD members including anyone working in early years settings, schools, MATs, trusts, partnerships, FE colleges, artist educators and museum & gallery learning teams.

## **The judges are especially looking for evidence of:**

- A measurable difference to workplace culture, team wellbeing, or professional practices within their organisation or community.
- Demonstrates a strong commitment to representing and empowering colleagues, ensuring their voices are heard and valued.





# Celebrating the very best of art, craft and design education

NSEAD Awards 2026

---

The NSEAD Awards programme is open to all NSEAD members.

**Not yet a member?** [Join now](#)

---

Do you have a question about nominations?  
Email the NSEAD team at [events@nsead.org](mailto:events@nsead.org)

