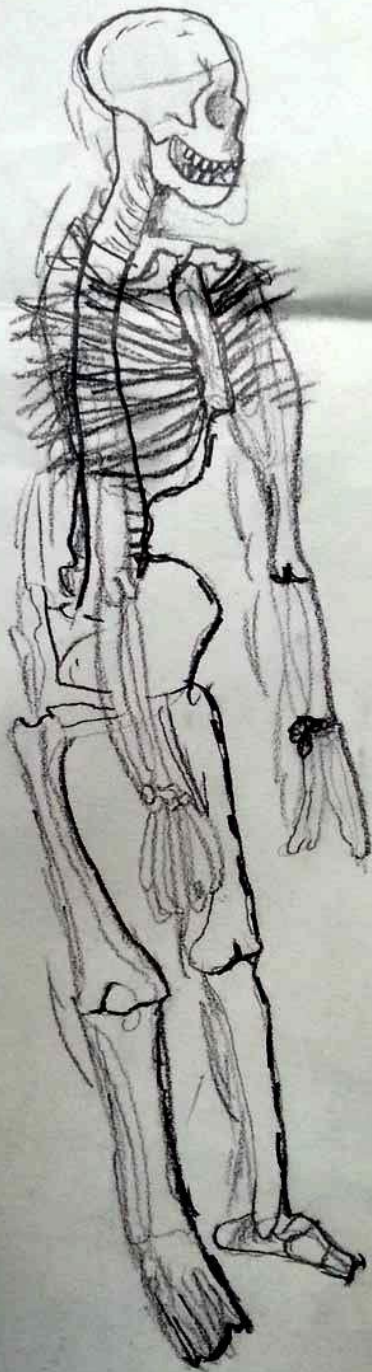
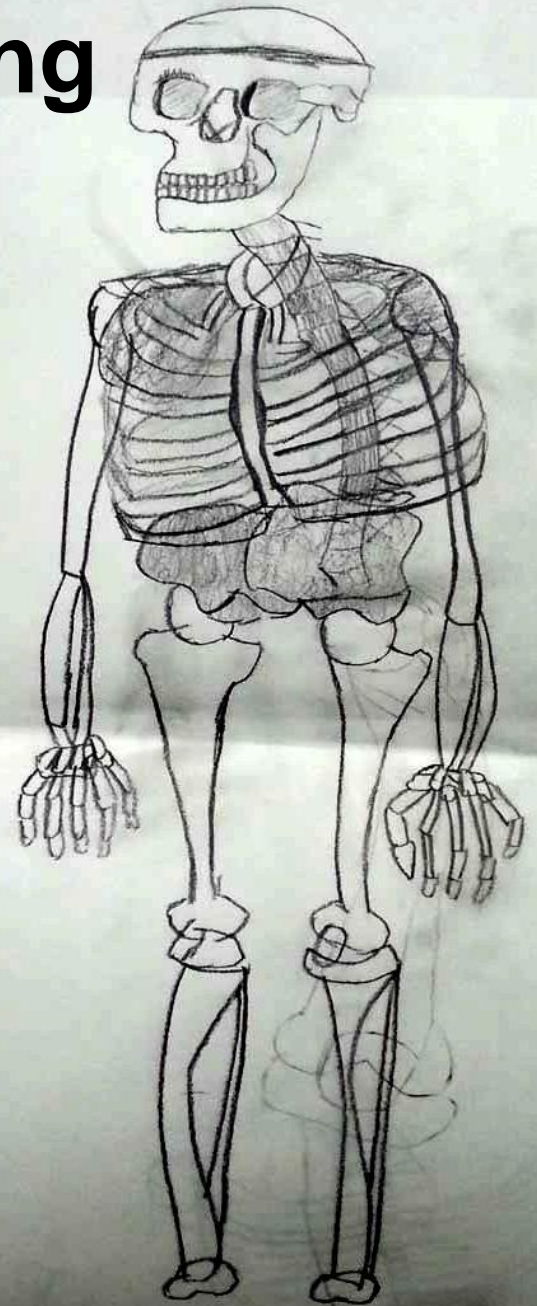


**students'  
drawings**

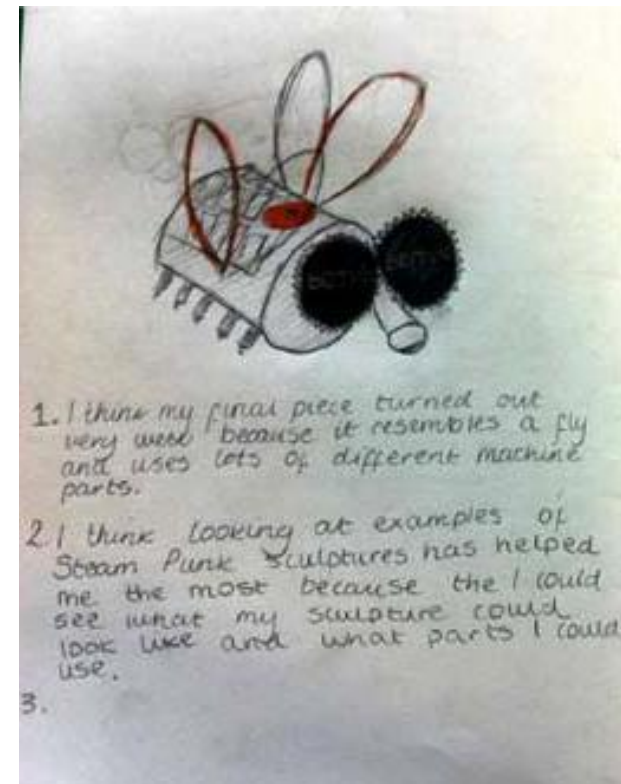
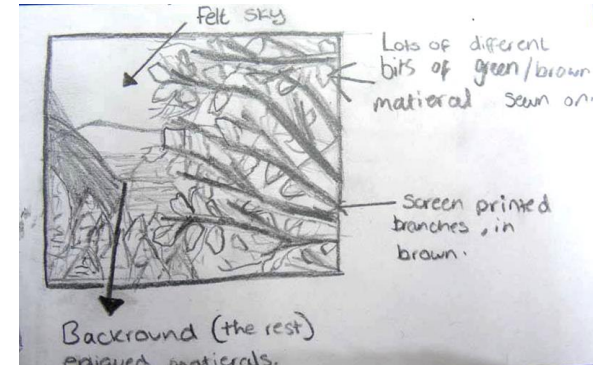
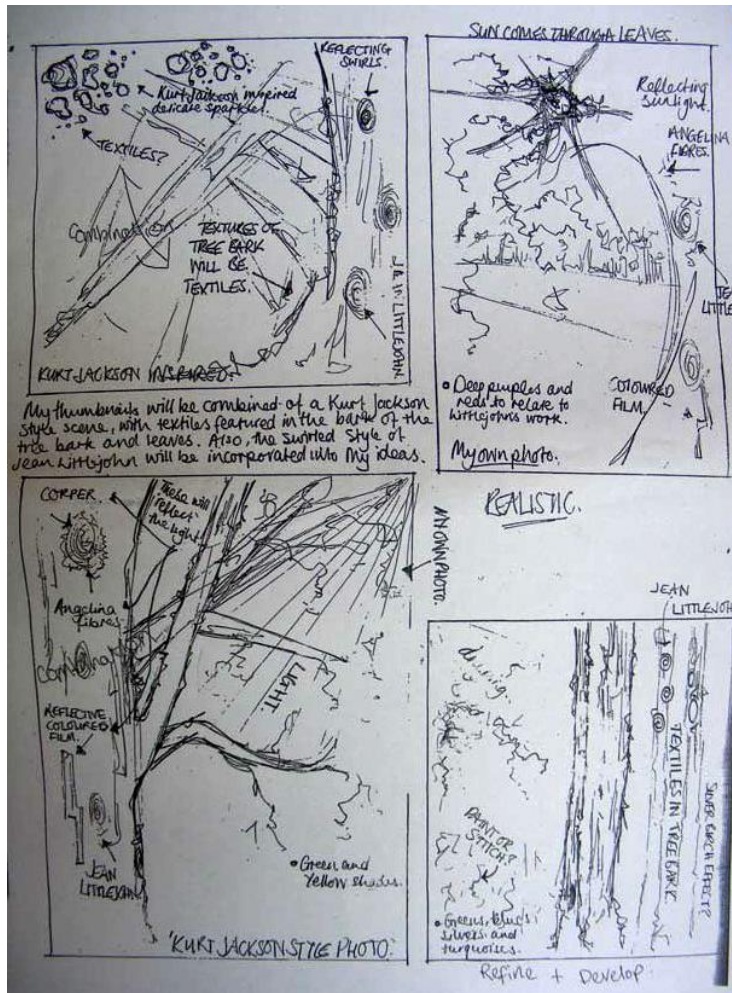


**thinking**





**expression**



action

## **Drawing as thinking, expression and action**

... students' drawings exemplify different kinds of drawing for different purposes ...

## **How can drawing help you learn?**

... think about .... investigating, understanding, thinking, generating and developing ideas, communicating thoughts and feelings...

## **What do you learn through drawing?**

... technical skills? thinking skills? attitudes?...

## Ask questions about a drawing...

**Why** was it done? What was the **purpose**? What was it **for**?

... to observe, analyse, experiment,  
imagine, invent, plan, organise, work out,  
describe, interpret, explain, illustrate,  
communicate ideas, express feelings...

**Ask questions about a drawing...**

**How** was it done?

What **medium** was used?

What **techniques** were used?

Can you name the **type** of drawing?

# **Ask questions about a drawing...**

**When** was it done?

At the beginning of a project?

When experimenting with ideas?

When experimenting with media?

When developing an idea?

As part of a series or sequence?

As a final piece?

**How do you know?**

# Ask questions about a drawing ...

What were key **ideas**?

What prompted or inspired the drawing?

... direct experience ... memory..

imagination ... artist's work...found image ..

What do you think is interesting about it?

## Ask questions about a drawing ...

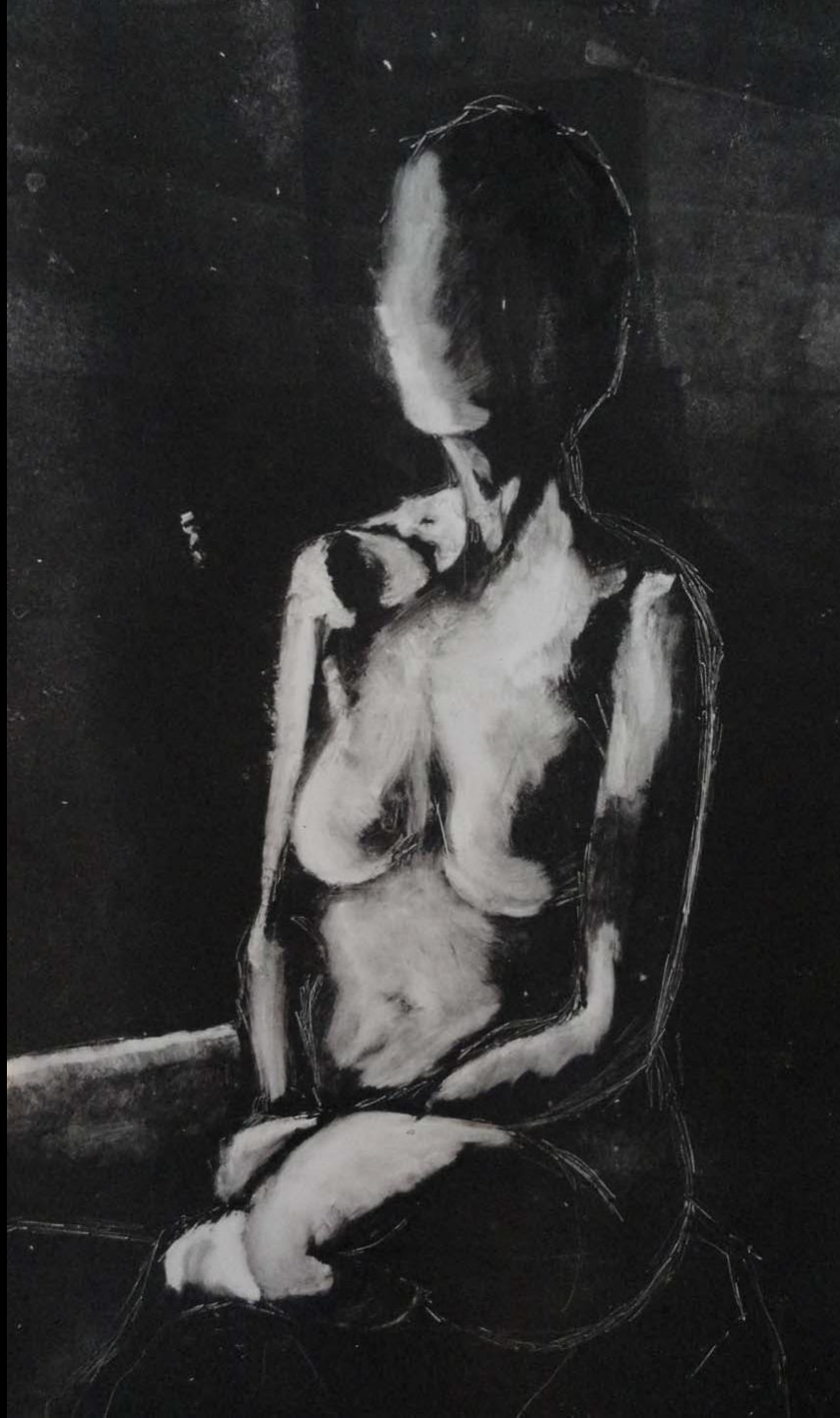
What are the **qualities** you notice?

... accuracy, ambiguity, boldness, care, coherence, confidence, control, delicacy, effort, emotion, experimentation, flair, fluency, honesty, humour, imagination, intensity, inventiveness, originality, panache, precision, risk-taking, sensitivity, strength, struggle, subtlety, surprise, technical skill ... any others?

What are **criteria** for assessment?











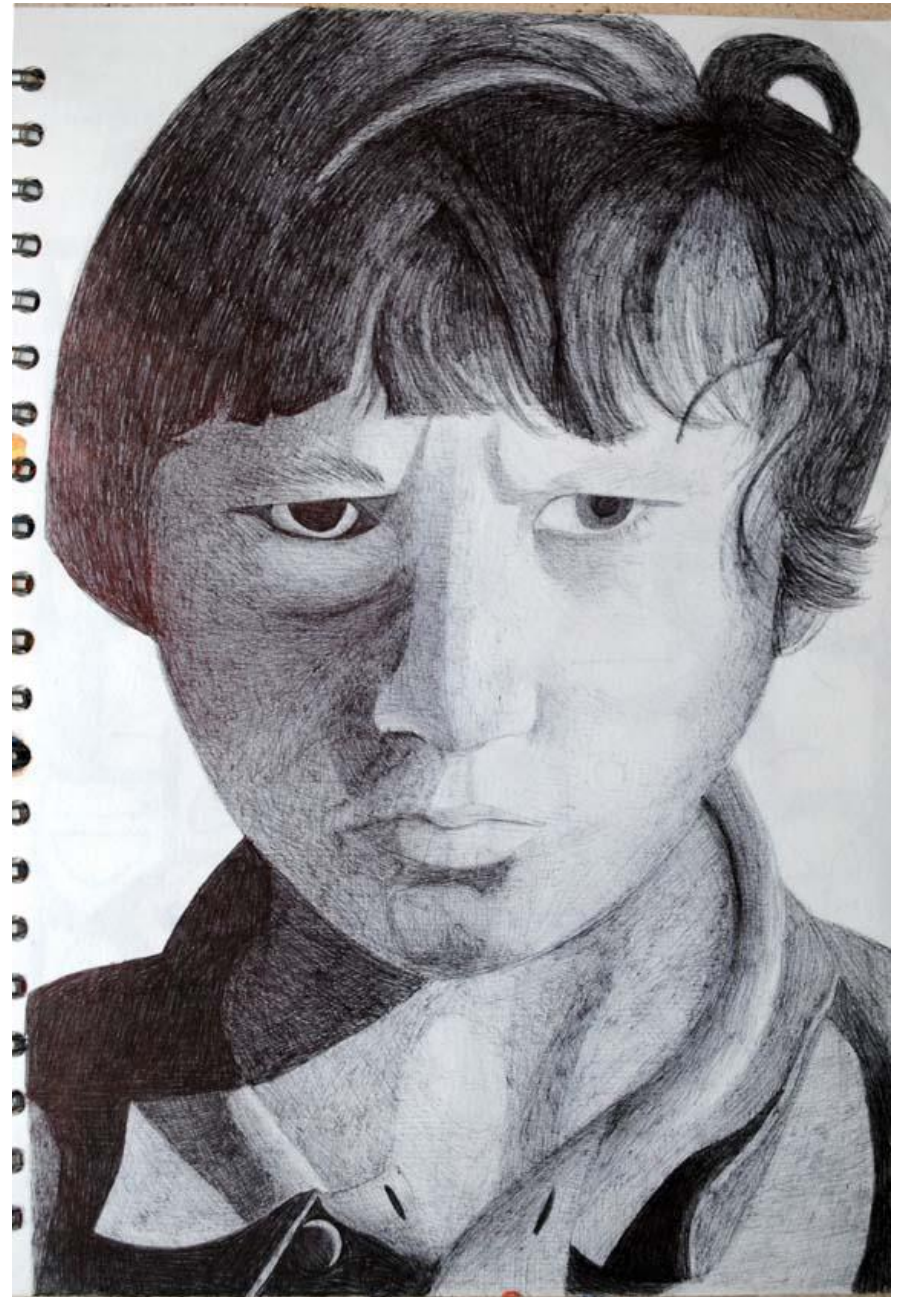


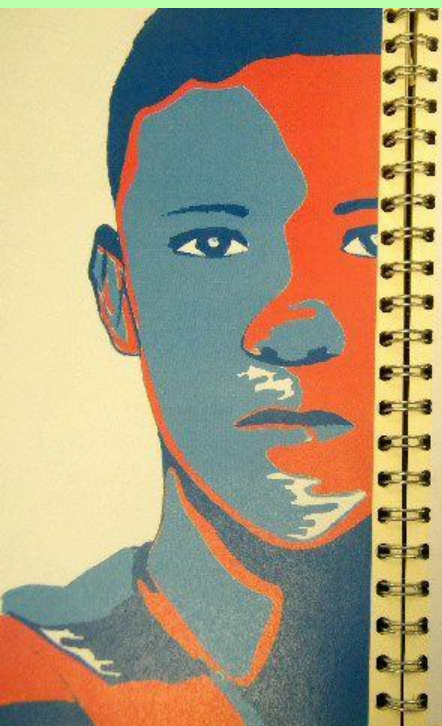




Sergei Vasilev  
faded Soviet  
prisoners











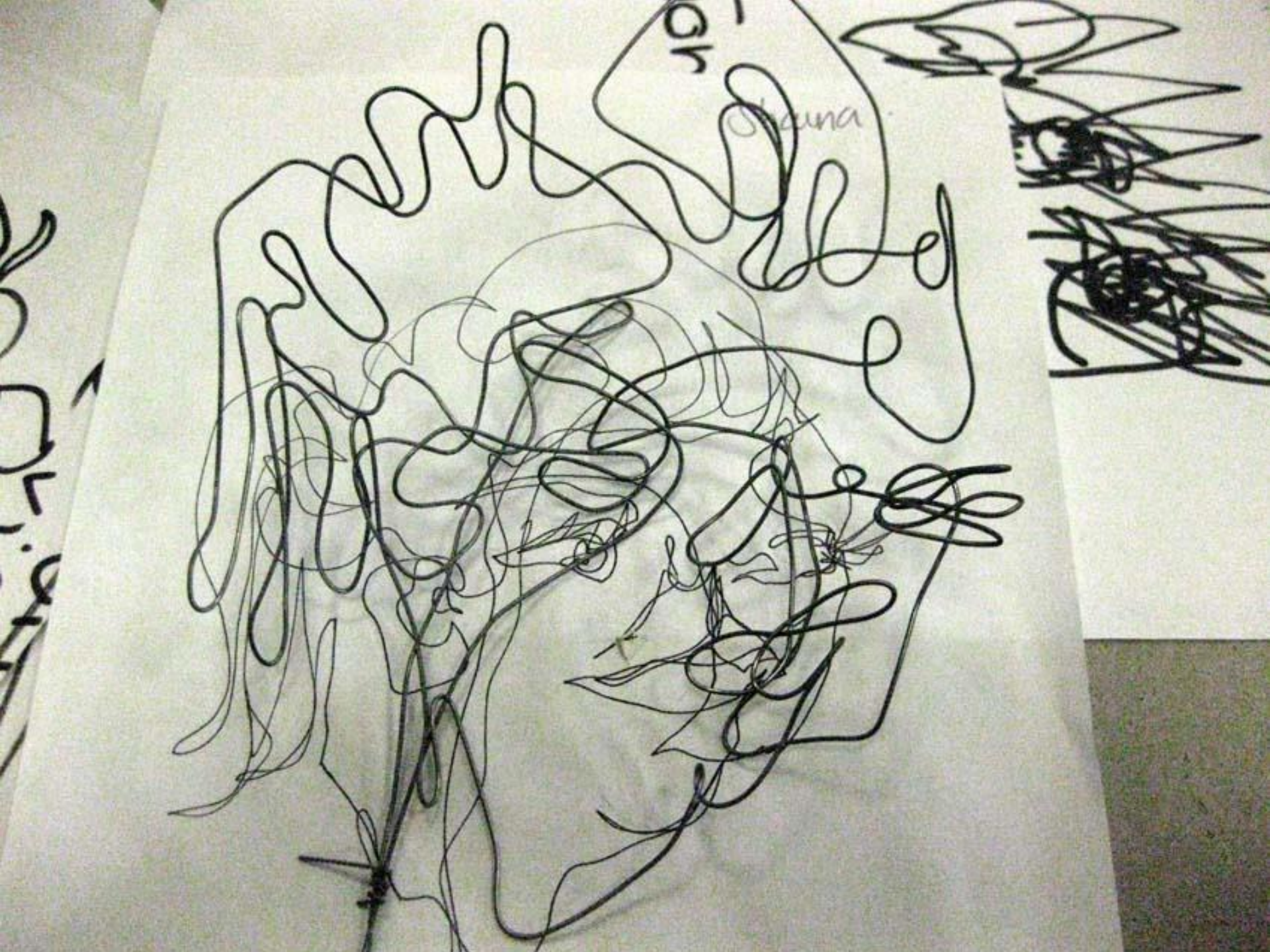






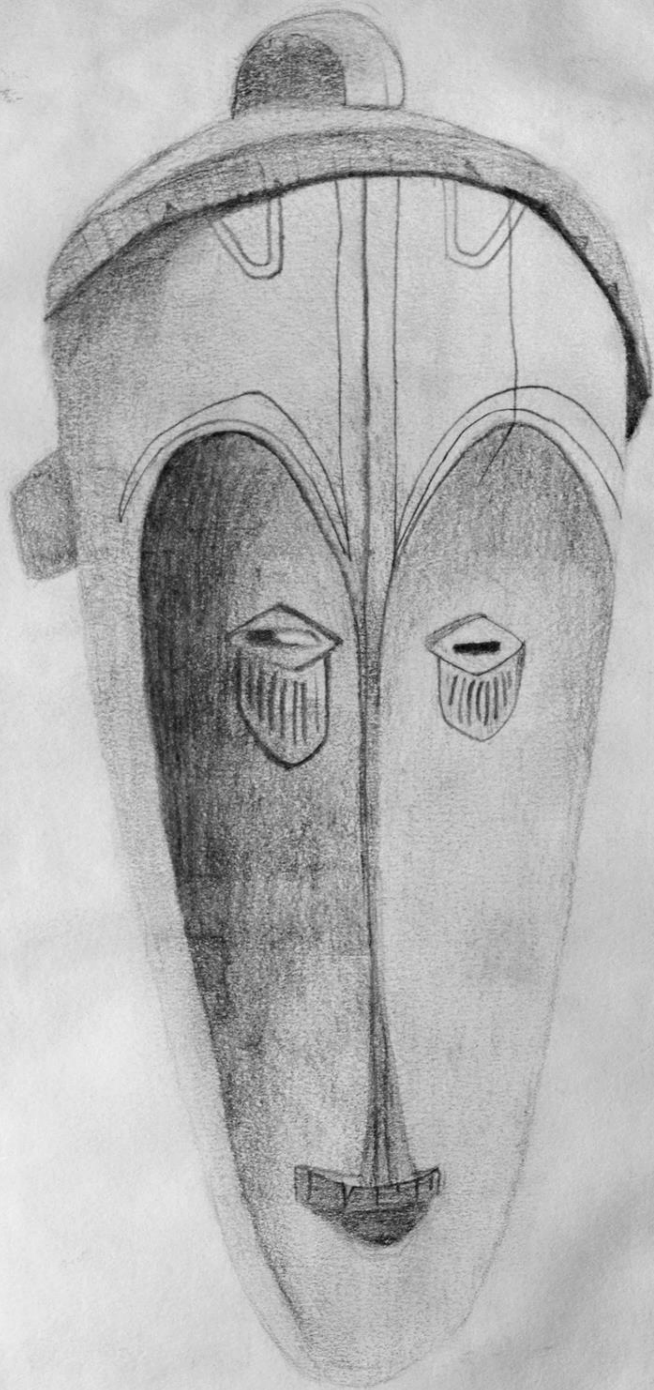






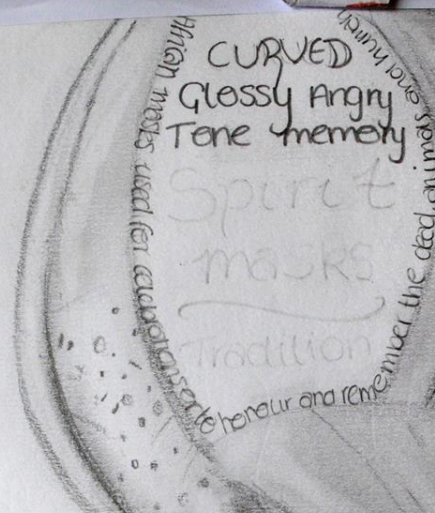






### Need

The way the eyes are turned down slightly makes it look angry or annoyed.



CURVED  
Glossy Angry  
Tone memory

Spirit  
masks

Tradition

honour and remember the dead, animals

made usually out of wood, a celebration of anything, religion, hope, life.

### Process

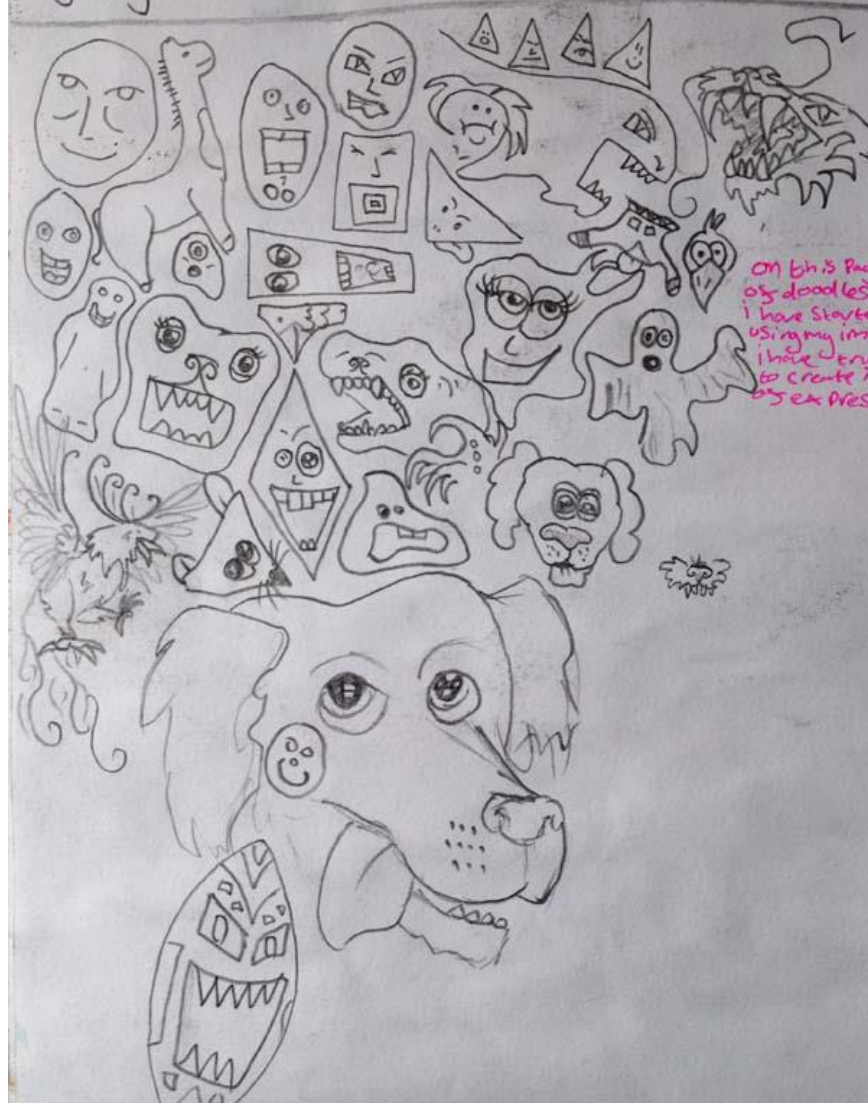
Normally carved from wood by hand in honour of an upcoming celebration. This looks glossy and looks shiny because of the way the light is shown.

### Form

The carving looks filled and smooth. Its also decorated around the eyes and horns so it must be of importance. Its also changed from an animal that was probably hunted into what looks to be something that's worshipped because of the point, reds, blues and oranges.

## Developing My Ideas

In Art we can develop ideas in 3 ways.  
 1) By looking at the work of different people.  
 2) Looking at the world as observation, even drawing photographs.  
 3) By using our imagination.

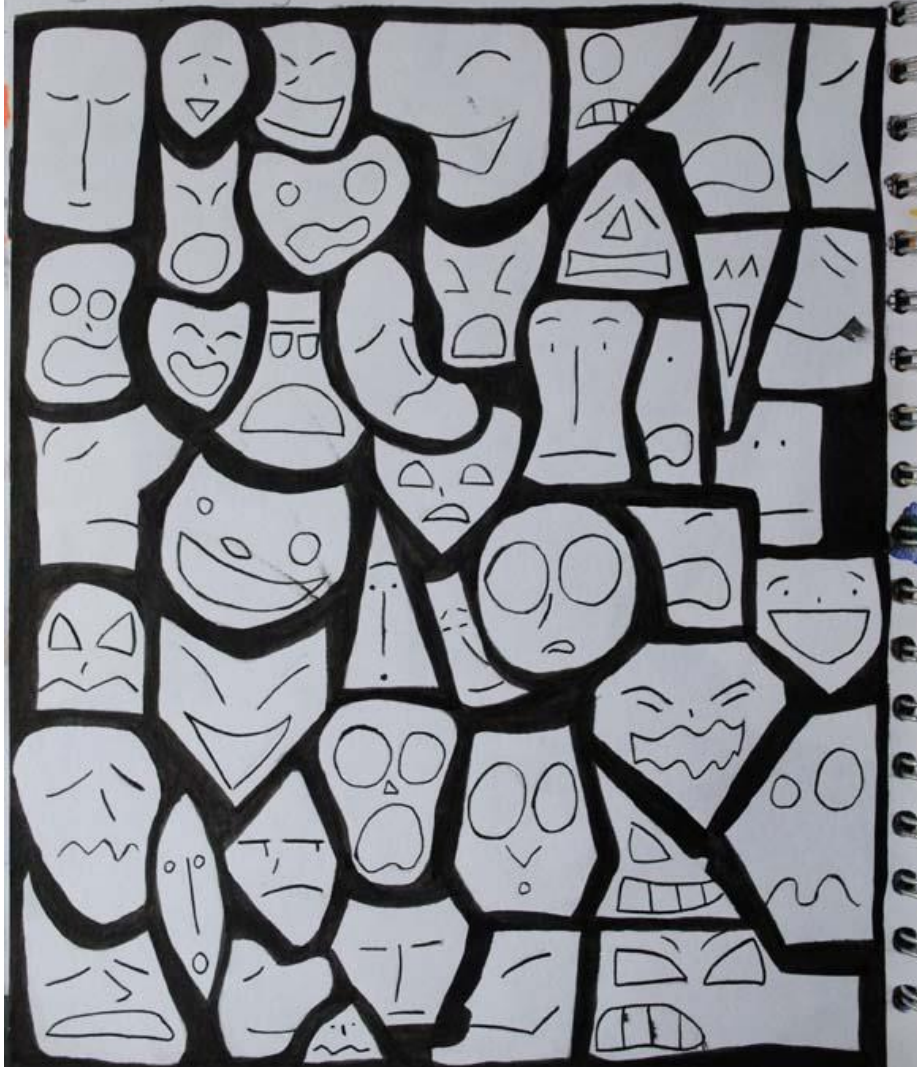


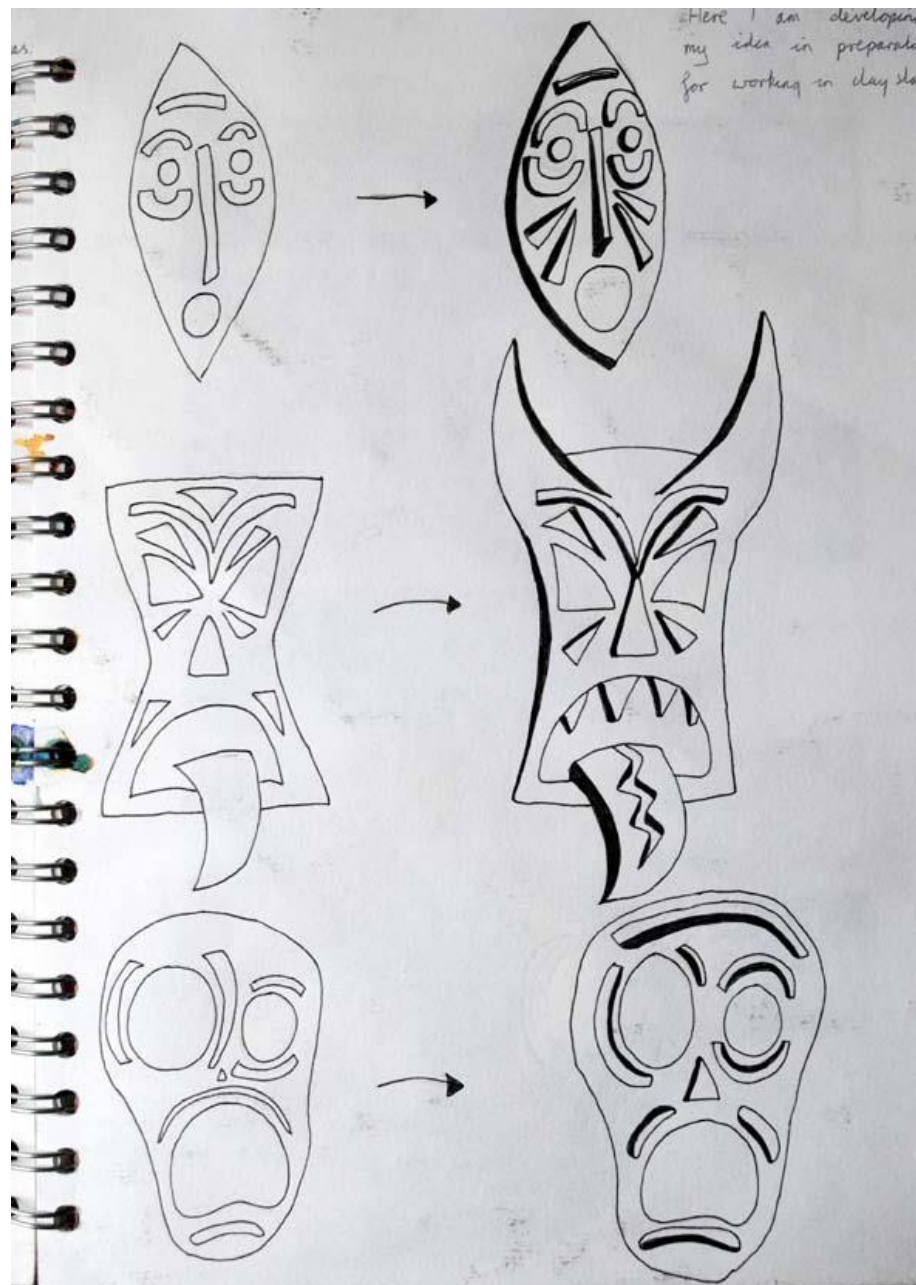
## Developing Ideas

In Art, we can develop ideas in 3 ways:

- 1 By looking at other artists work
- 2 By looking at the world and making observational drawings
- 3 By using our imagination

On this page, I have started using my imagination to develop my ideas. I have tried to create a range of expression using just the features and shape of a face.











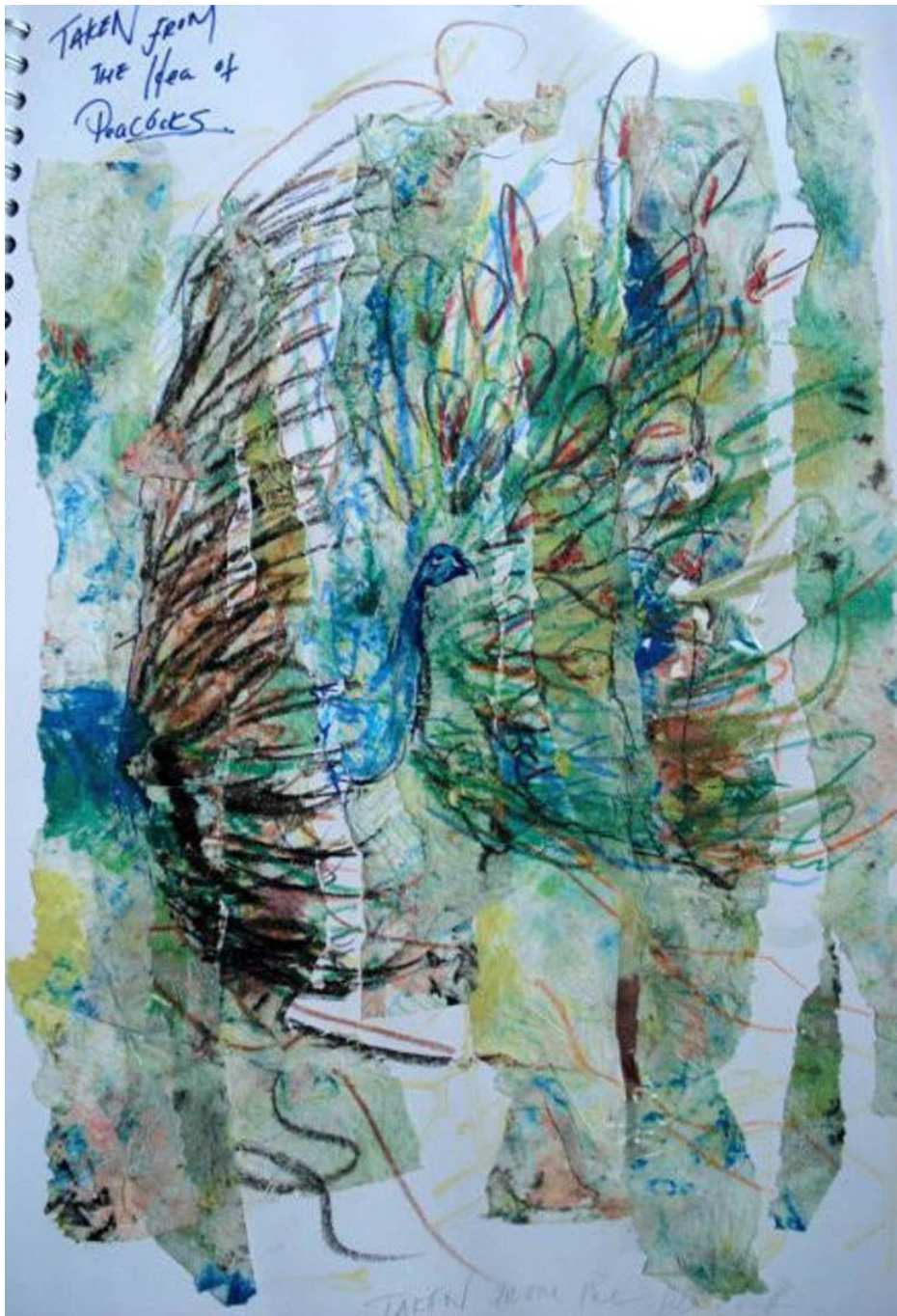


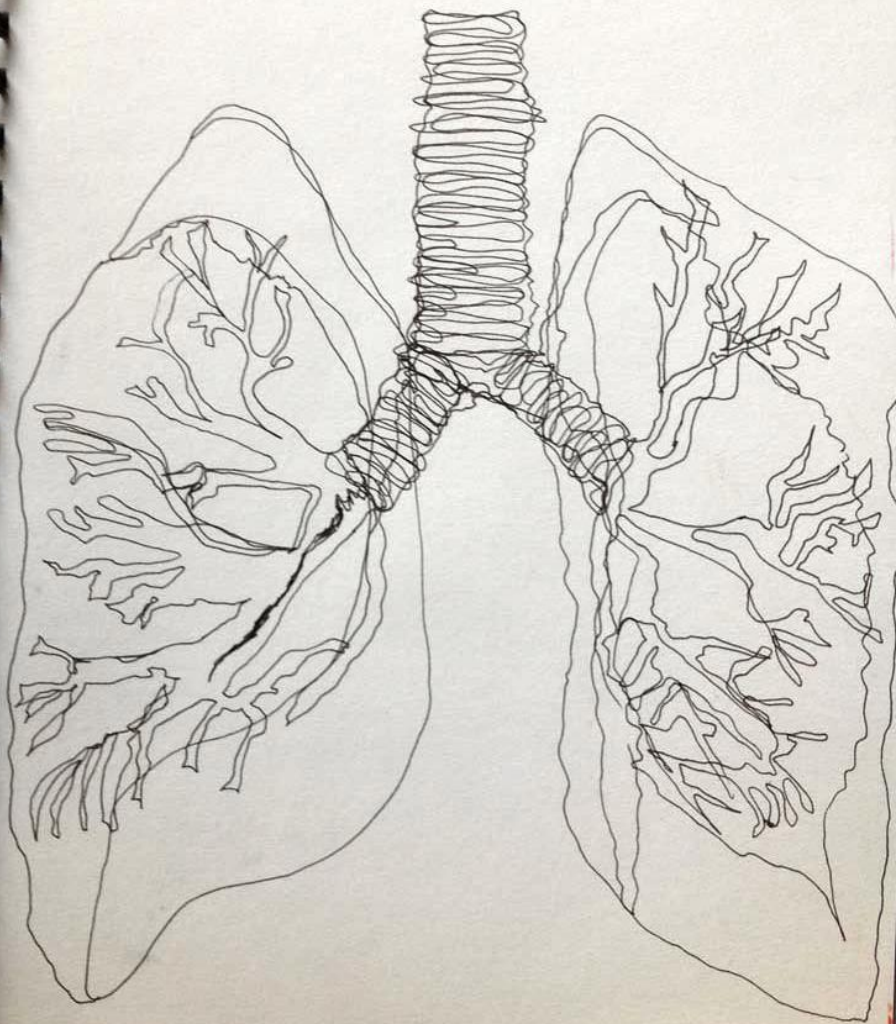


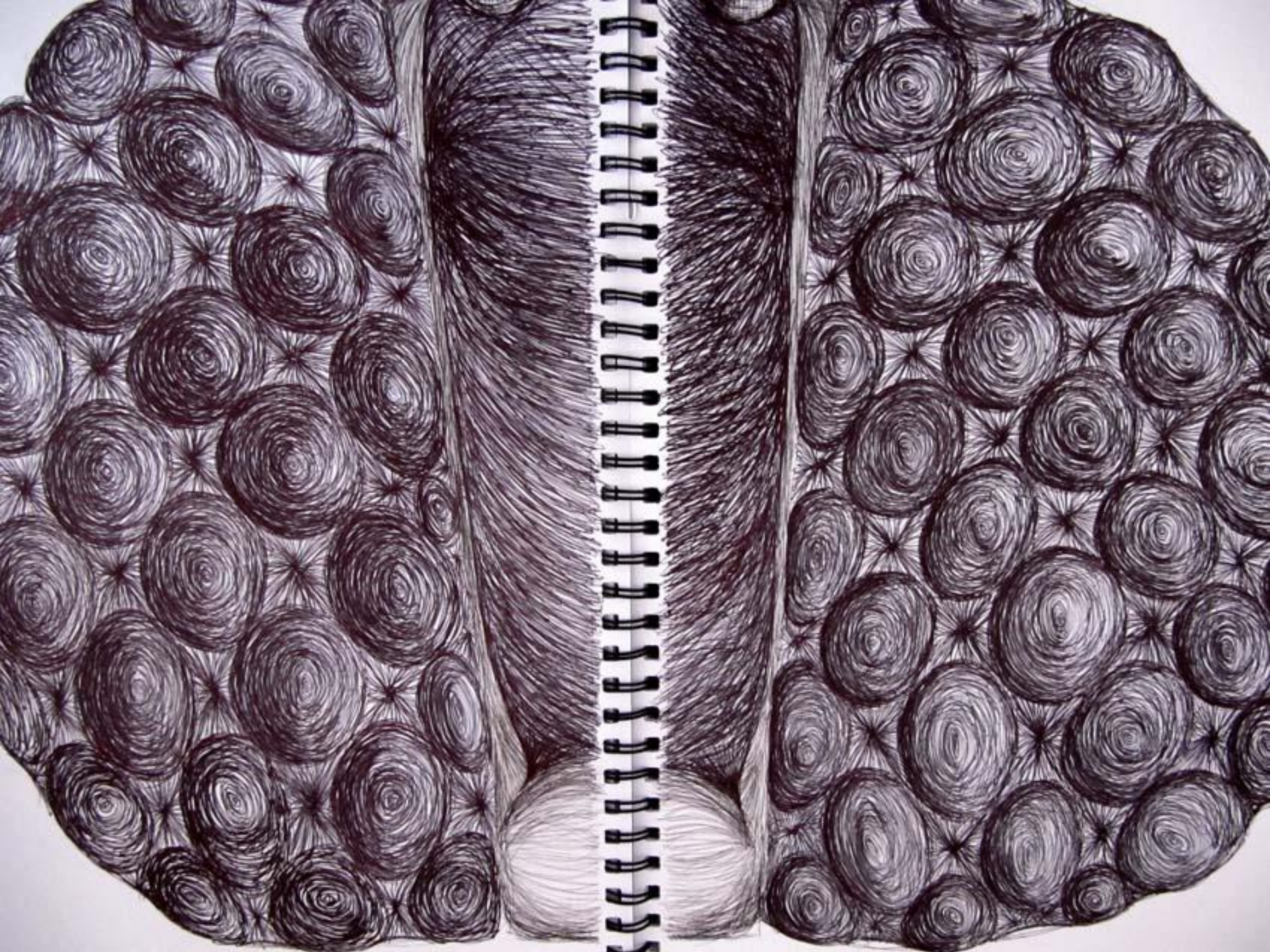








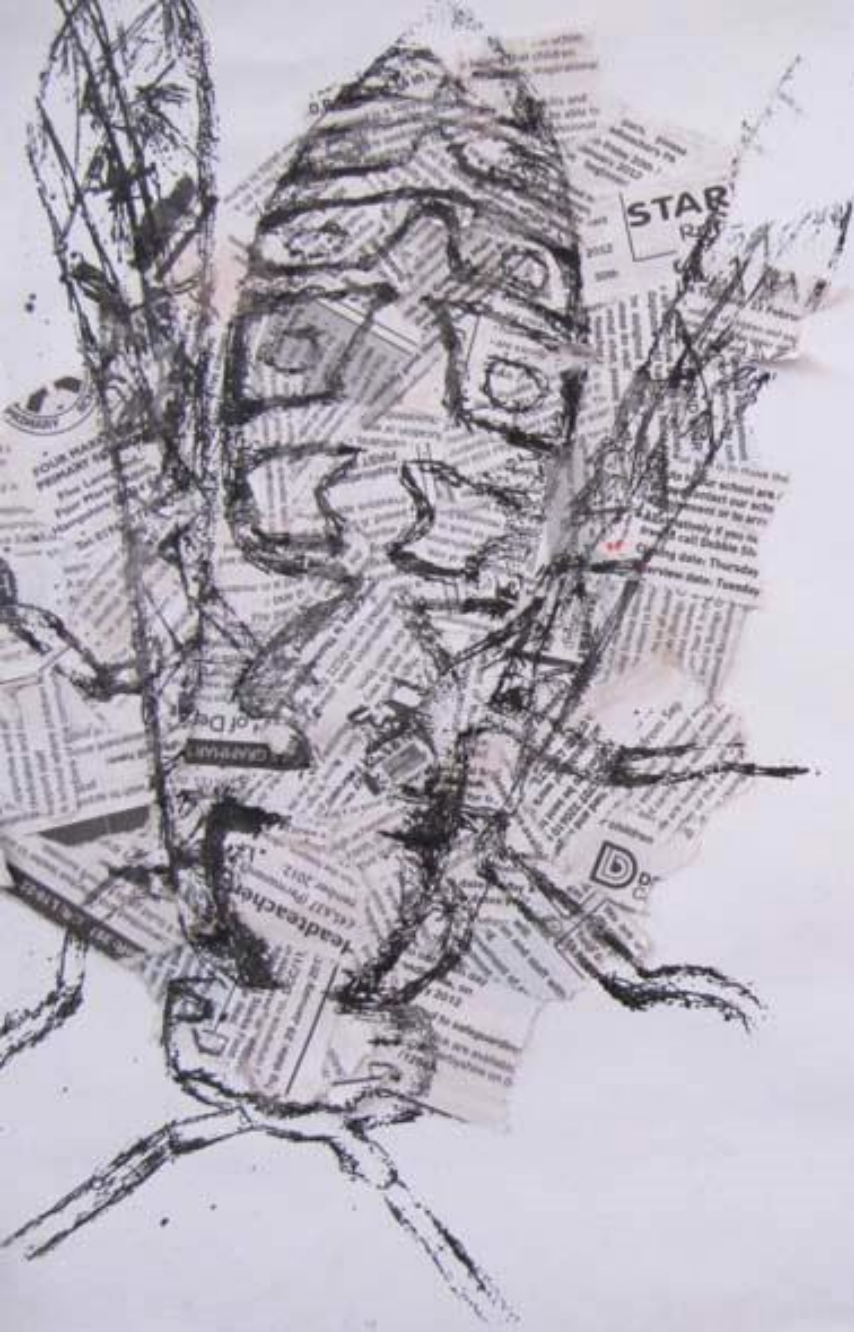


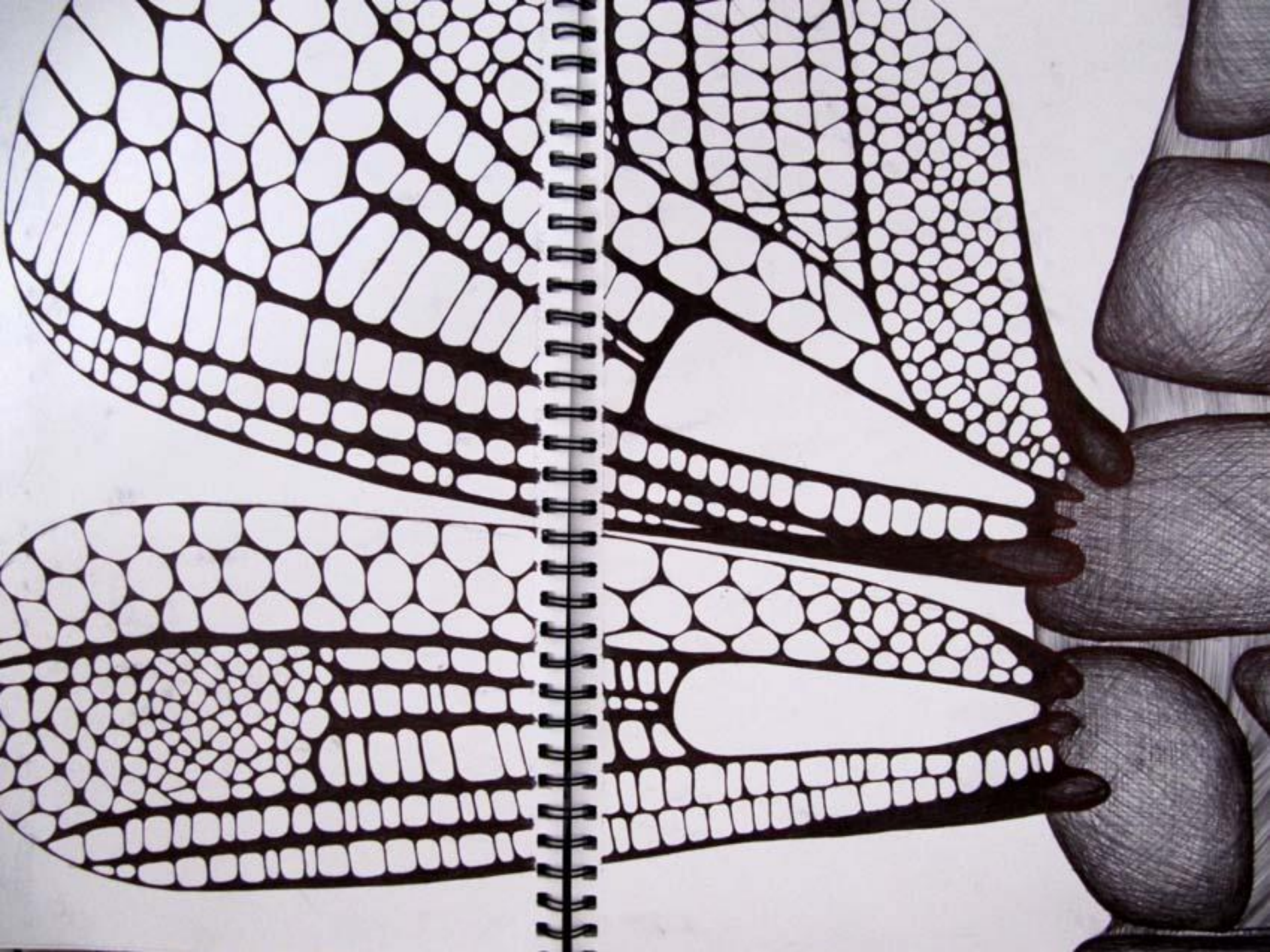




The form of a Fly is very intricate the wings are delicate but support the large clumpy body, which is then covered in hair like structures; the head of the fly has huge eyes with many lenses. Over all there are many textures and structures to it and to copy it required lots of different materials and shapes. Wire wouldn't work for this as the shape produced would have a hollow feel to it but metal made it to clumpy as it can only be scaled down so far. Also the creases in the metal caused sections to bend and brake due to the curves and angles required to form the shape.



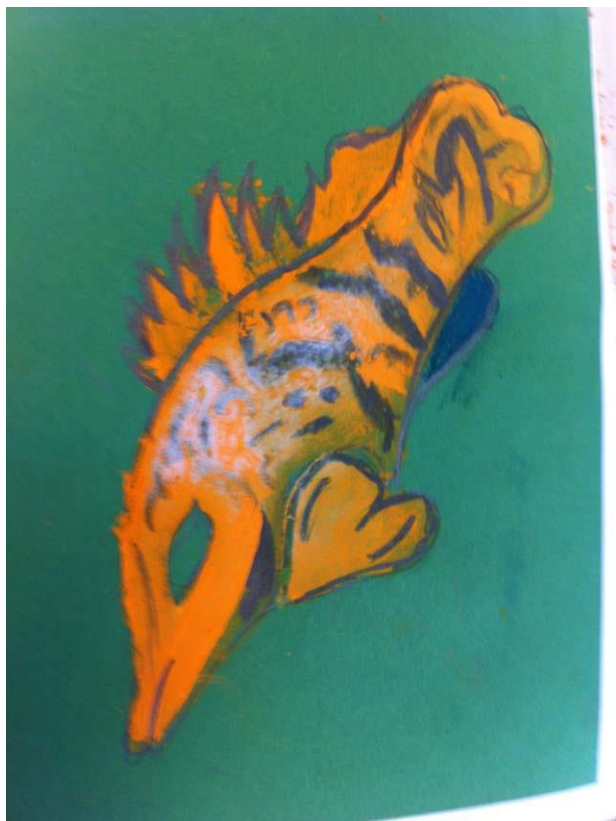


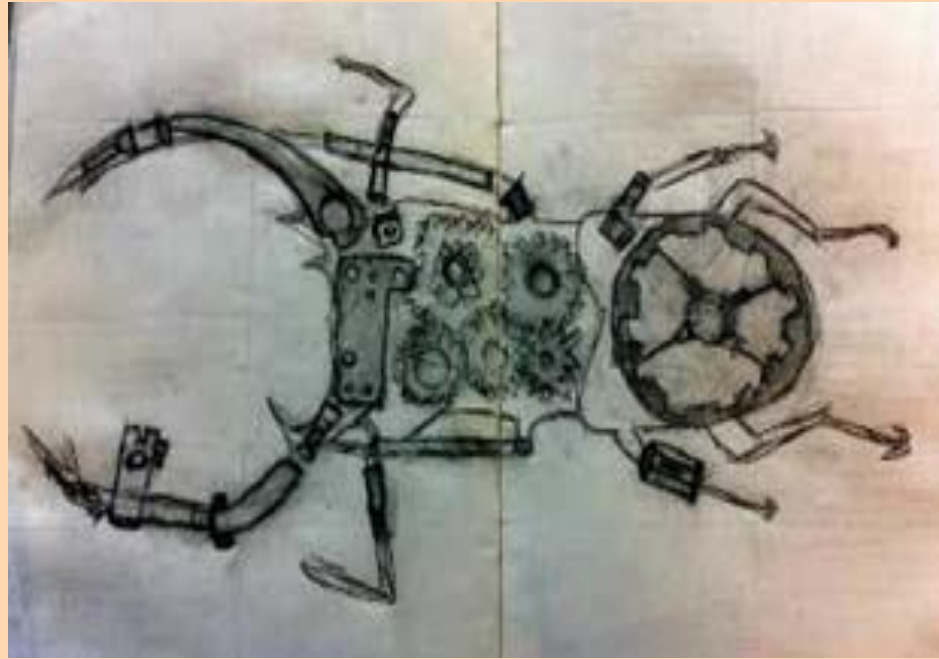
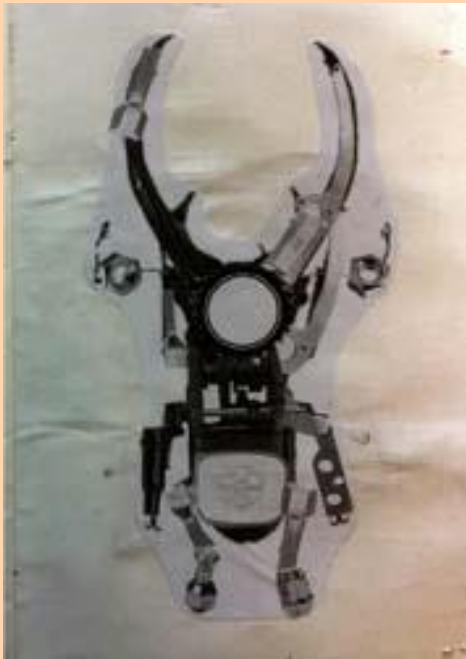








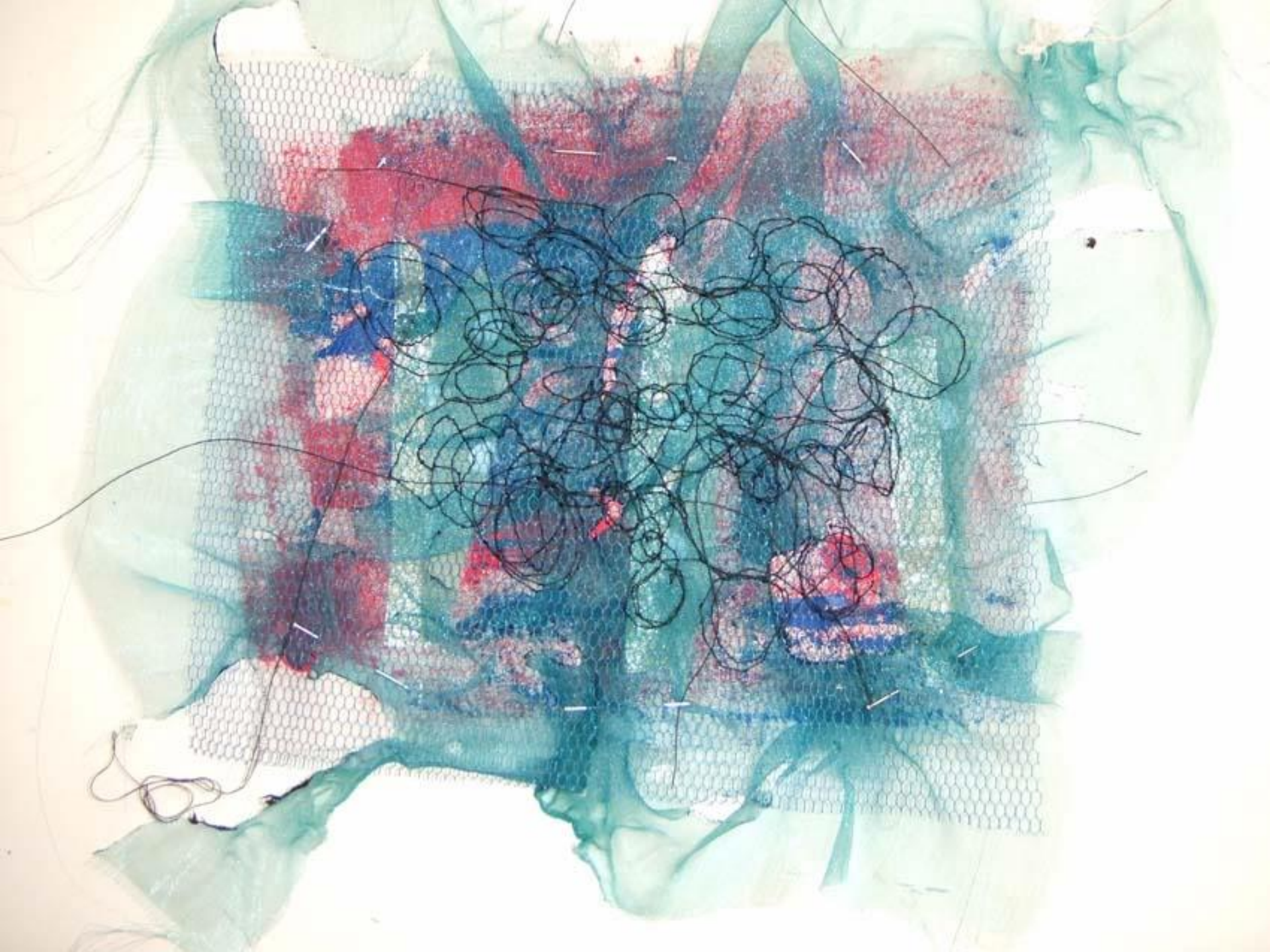










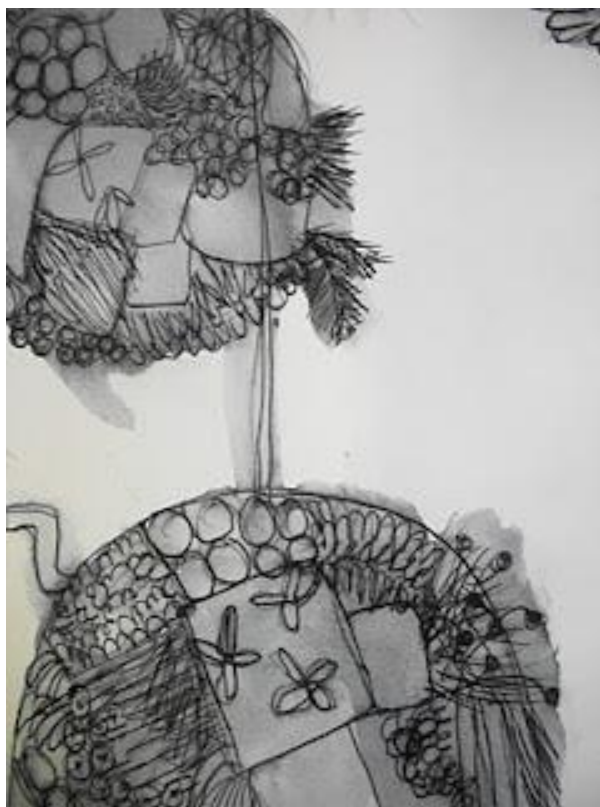


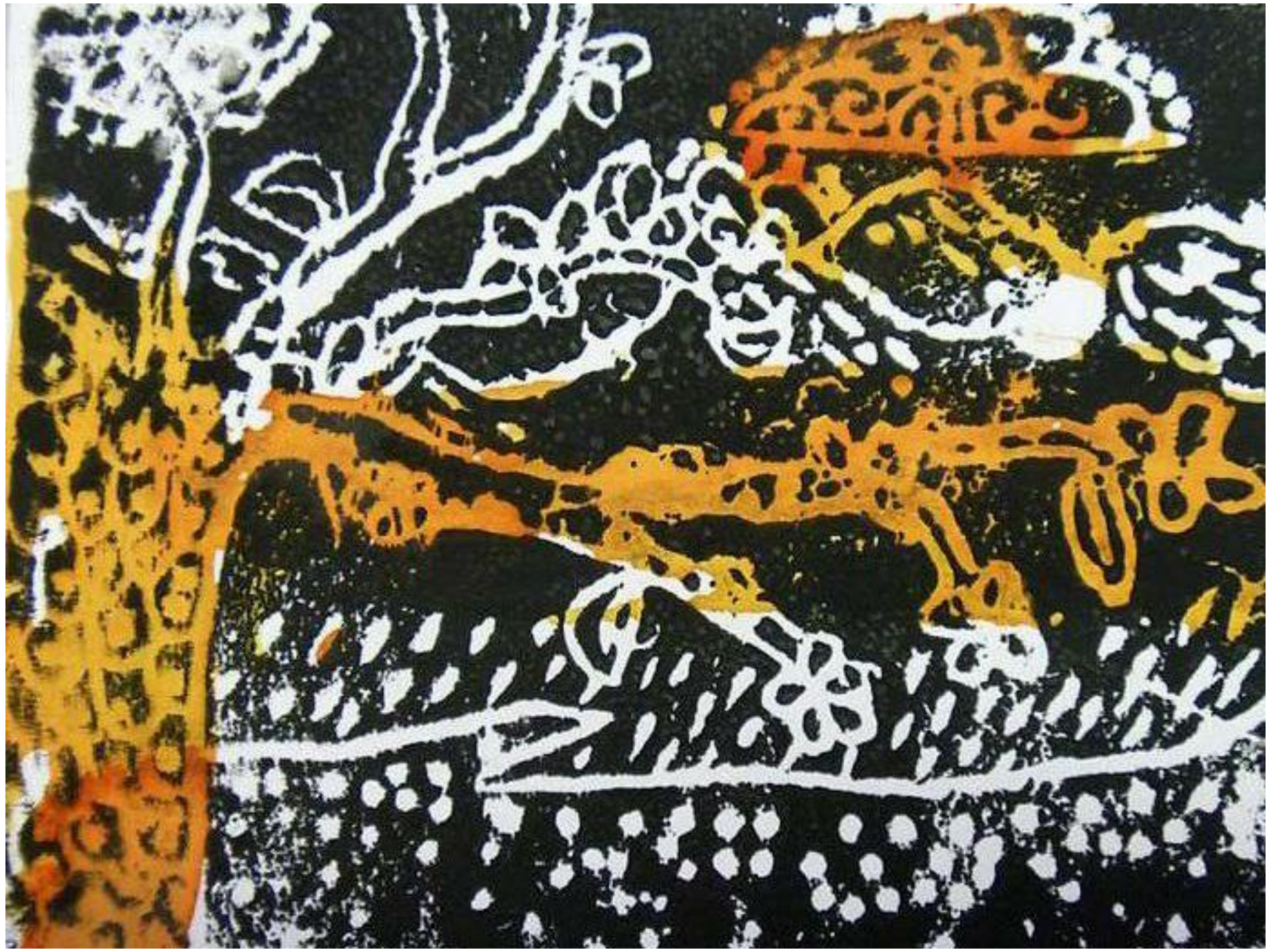


















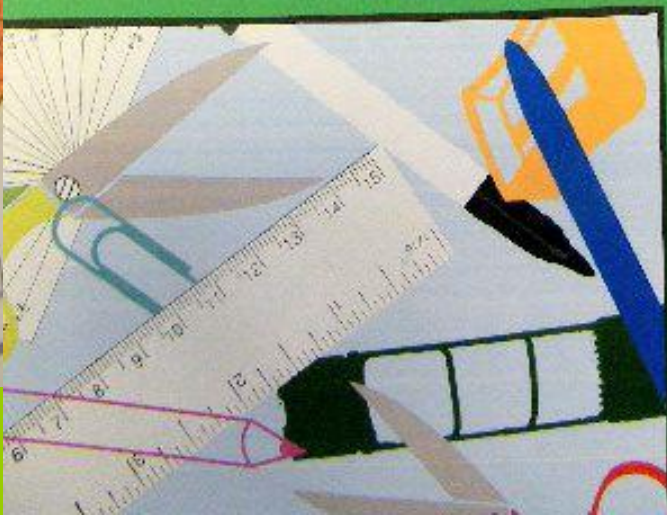
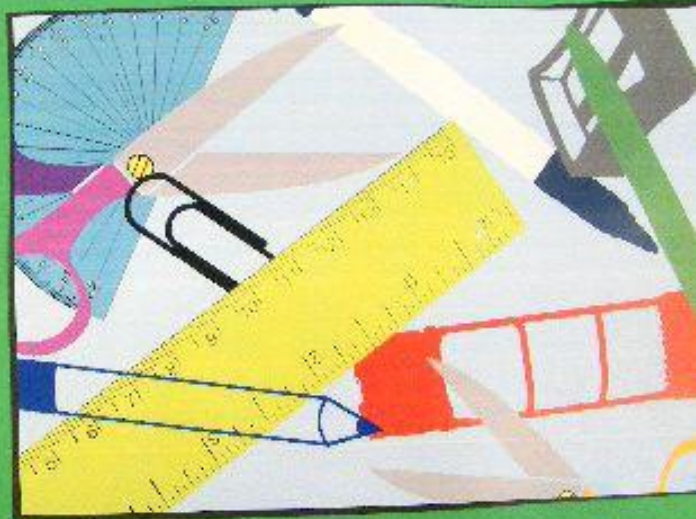










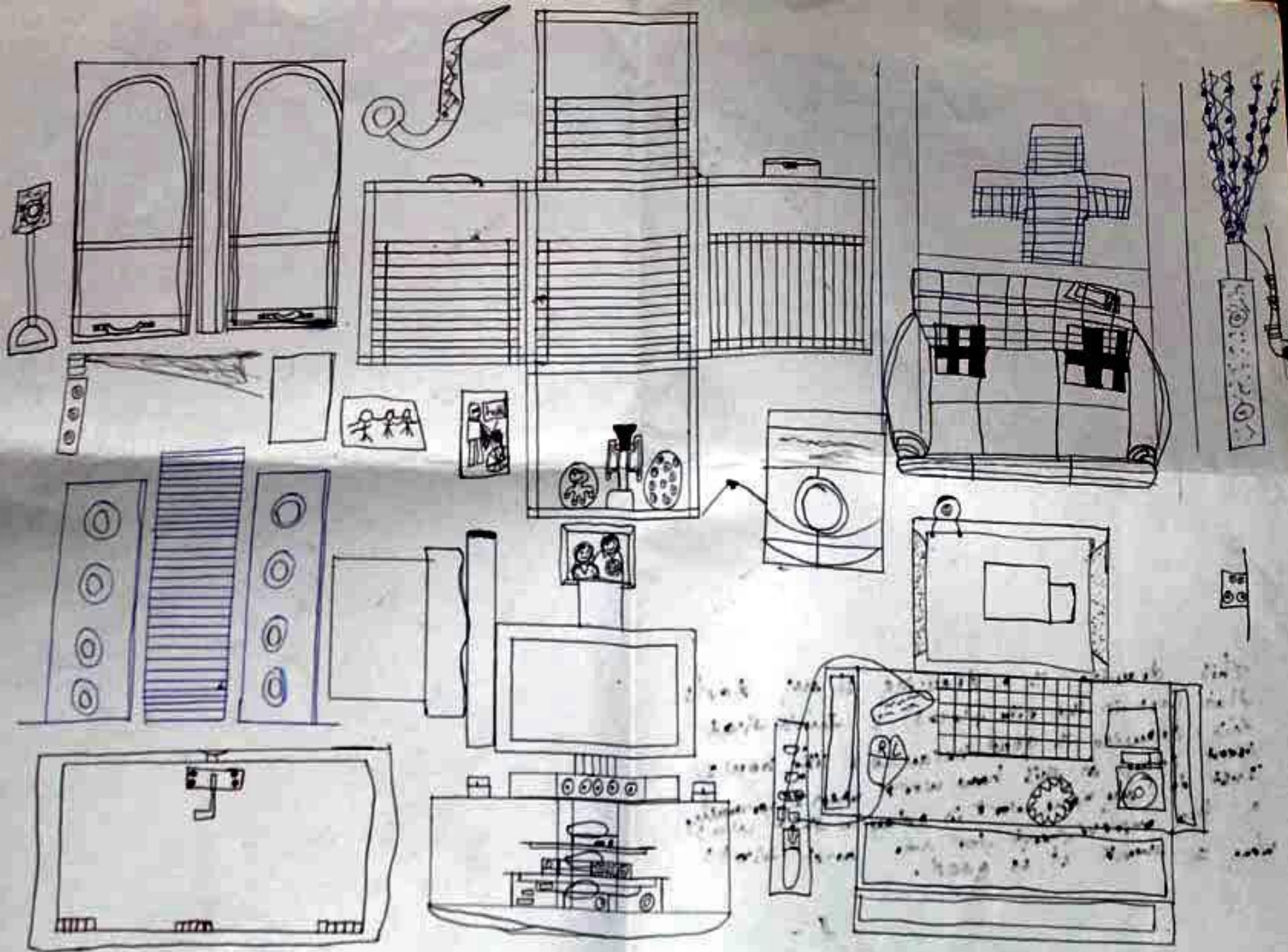


A continuous line study in response  
to chardin using oil pastel on  
coloured ground  
(paper)

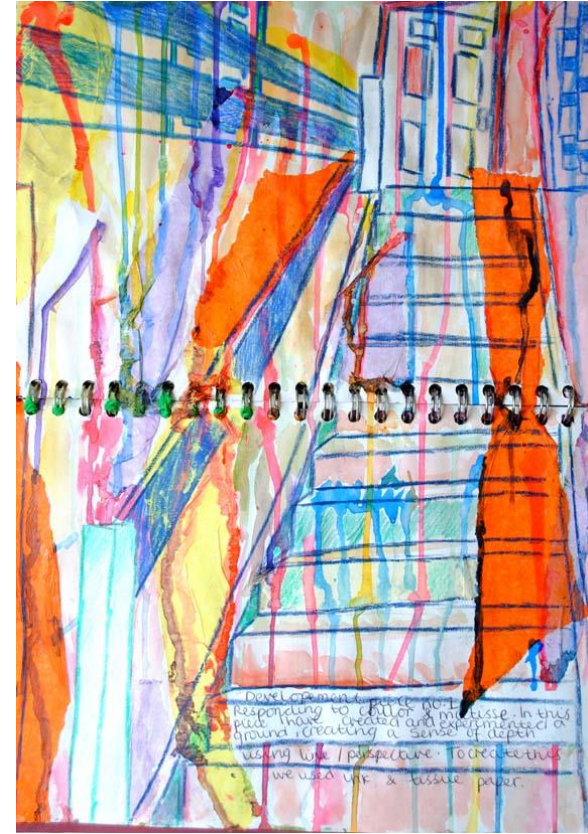




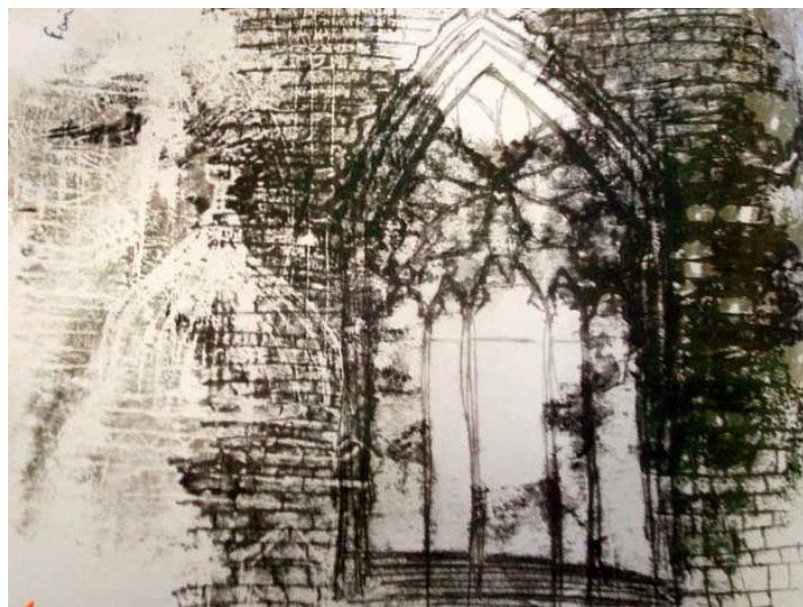








Development piece, not  
responding to color & texture. In this  
piece, I have created and experimented a  
ground, creating a sense of depth  
using line / perspective. To create this  
we used ink & tissue paper.







Marque  
d'ac.

This is my  
Small world,  
is made up of

- Blocks
- Shell
- Mini Dinosaur
- Computer







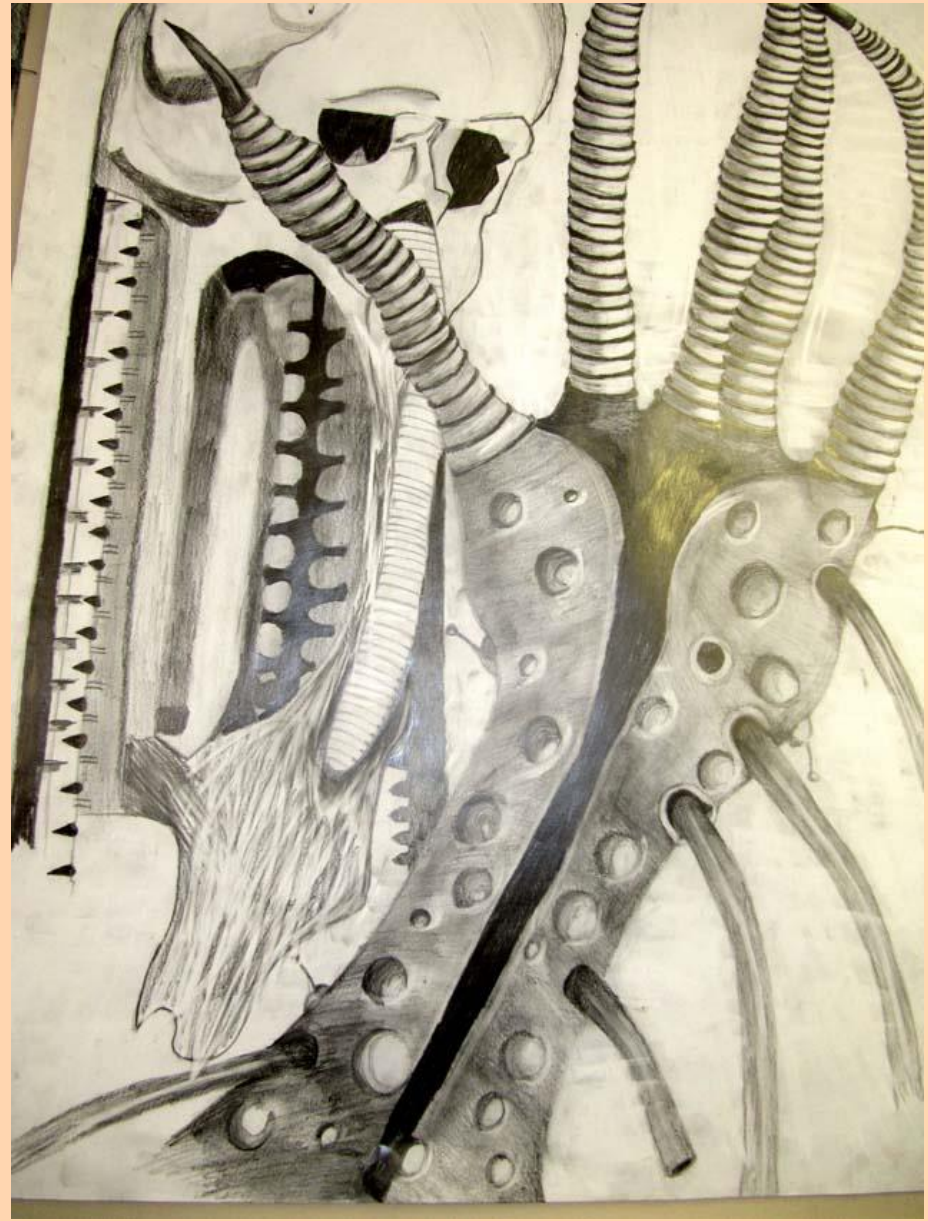
















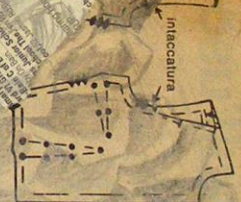
Morgan Crucible	26914#	+6%	360	
Oxford Instruments	1160	+25	1285	714
Penshaw	1473	+62	1866	800
Spectra	1567#	+38	1902	1039
TT Electronics	1544	-1	206%	120%
Volex	248	+3	355	217
Xair	220#	+5	295	208%
XP Power	1240	+25	1730	600
<b>Equity Investment Instruments</b>				
Aberdeen All Asia	293		320%	247%
Aberdeen Asian Smi	717	+13	742%	551%
Aberdeen Dev Cap	21			
Aberford Smi Co	563	+3	714	494
Aerco Debt	79%	+4	92%	78%
Acom Income	1679#	-2	209	152%
Advance Divdg Fund	406%	+4	503%	396
Albany	239%	+5	278	231%
Abion Prime VCT	52		62	52
Abion Tech & Gen. VCT	65		78	63
Abion VCT	65%		70	58
Alliance Trust	34014#	+3%	392%	310%
Artemis Alpha	276%	+1	328	236
Aurora Inv Tst	149%		228	147
Baile Gifford Japan Nip	190	+3	212%	178%
Baile Gifford Shin Nip	174	+3	191%	150%
Bankers Inv Tst	392	+7	433%	346%
Baronsmead VCT	6714#		73	65%
Baronsmead VCT 2	89#		92	84%
BH Global EUR	906%	-2%	977%	863%
BH Global GBP	1160	+7	1212	1085
BH Global USD	731	-6%	787%	686%
BH Macro EUR	1546	-3%	1638%	1367%

JPM C	715	+15%		
JPM L	446	+4	543%	
JPM Glo	969%	+2%	1048%	
JPM Indian	262	+5%	285%	
JPM Jap Smi Co	595	+10	1175	920
JPM Japanese	365#	-3	428%	310%
JPM Mid Cap	1164#	+24	1280	1076
JPM Overseas IT	364%	+8%	396%	323
JPM Smaller Co	256	+%	269	237
Jupiter Euro	852#	+1%	954	728%
Jupiter Primdha	85%		90%	77
J2 Capital Partners	150#	+2%	179	133%
Keystone Inv Tst	294%	+10	408	278
Law Debenture	240%	+2%	263	228%
London & St Law	126%	+1%	137%	109
Lowland Invest Co	101#		106	99
M&G Equity	61	+2	61	42%
M&G High	920%	+13%	1090	823
Majestic Inv	349%	+7%	430	341%
Manchester & Lon	30	+%	30	26%
Martin Currie Pac	233%	+1	263	214
Martin Currie Prio Tst	1014#		117%	100
Matrix Inc & Gwth 4	104	+%	111	97
Maven Income And Growth VCT 61				
Mercantile Inv Tst				
Merchants Tst				
Merrill Lynch Nw Egy				
Mid Wynd Int				
Midas Inc&Gwth Tst				
Mithras Inv Tst				

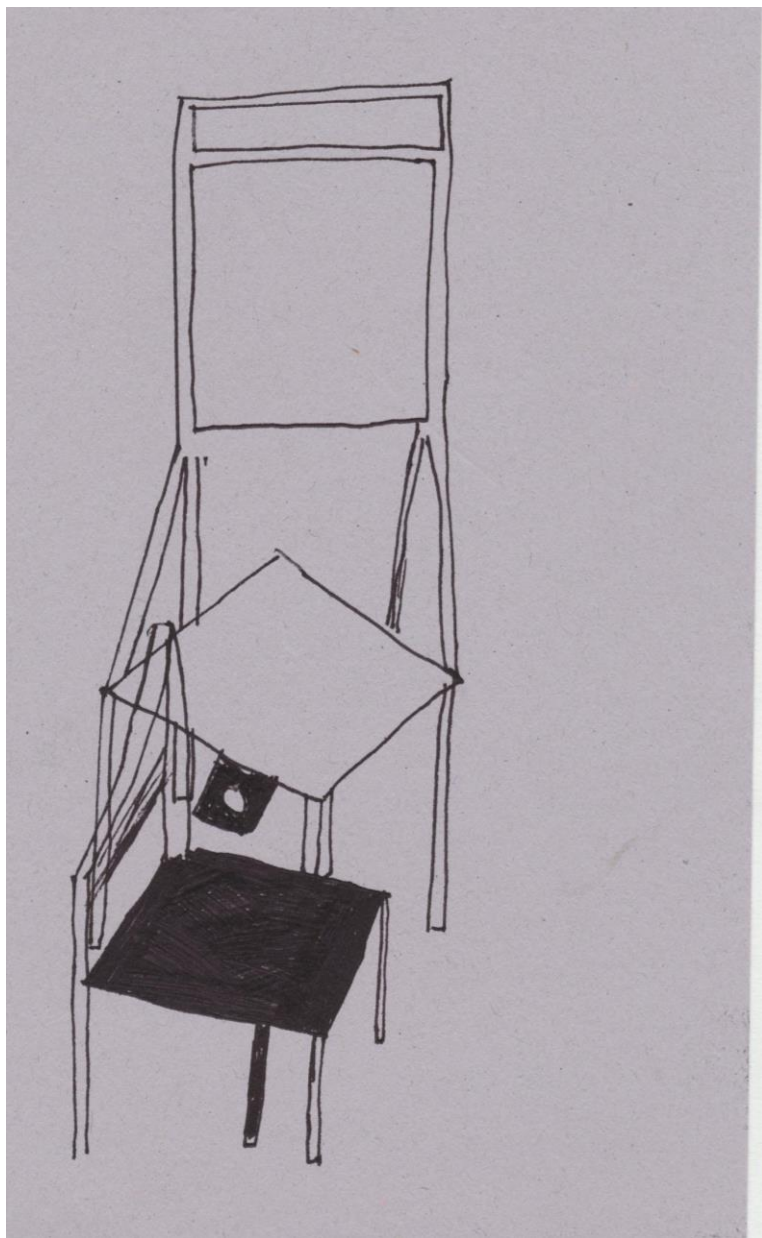
Daily Express premium rate share service: For

**Modifica per spalle strette**  
La differenza tra l'ampiezza della propria spalla e quella del modello indica la profondità della piega da girare da farsi sia sul davanti che sul dietro del modello stesso. Iniziare la piega sul davanti e sul dietro a metà della spalla. Terminare la piega, inaccare la costura del giro manica ben stretto.

**Modifica per spalle arrotondate**  
Tagliare all'incirca il giro del modello sopra le tasche sotto il modello e aprirlo, formare pinces nella parte di dietro.



Modifica sul rovescio della busta apportare queste semplici modifiche:



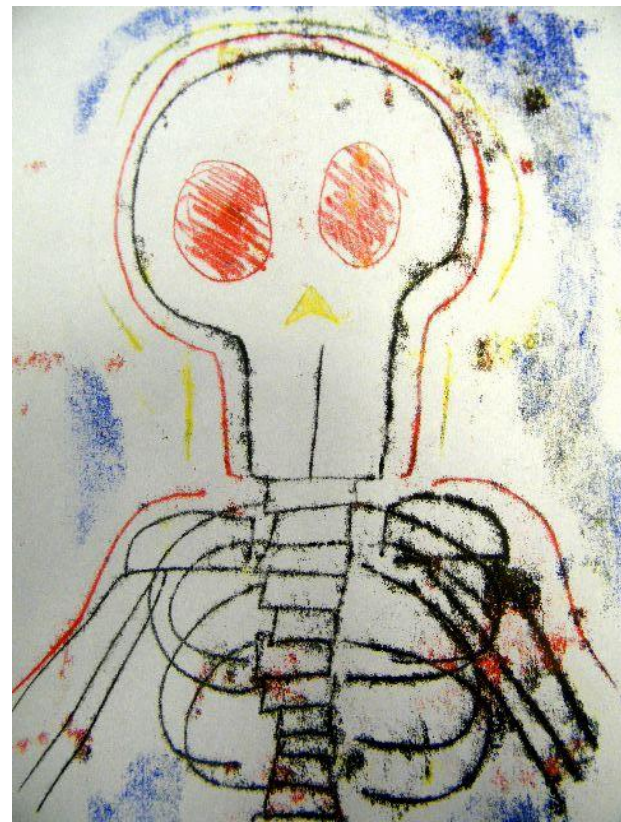




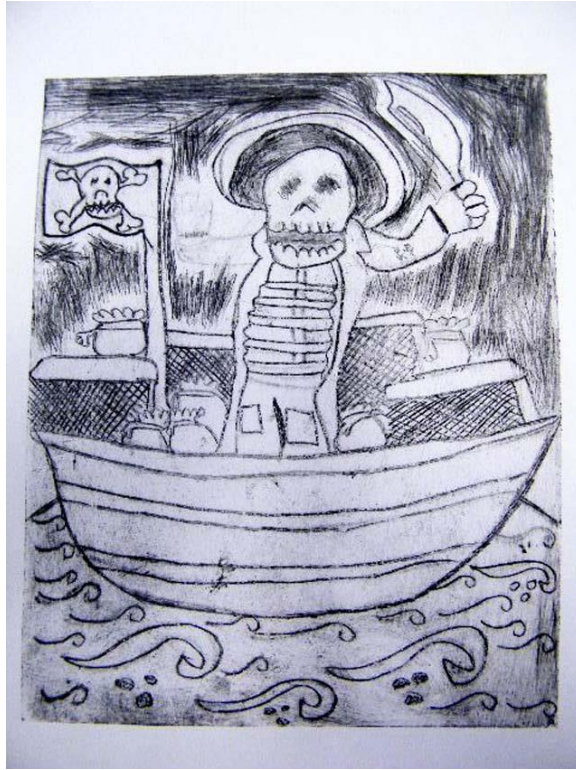


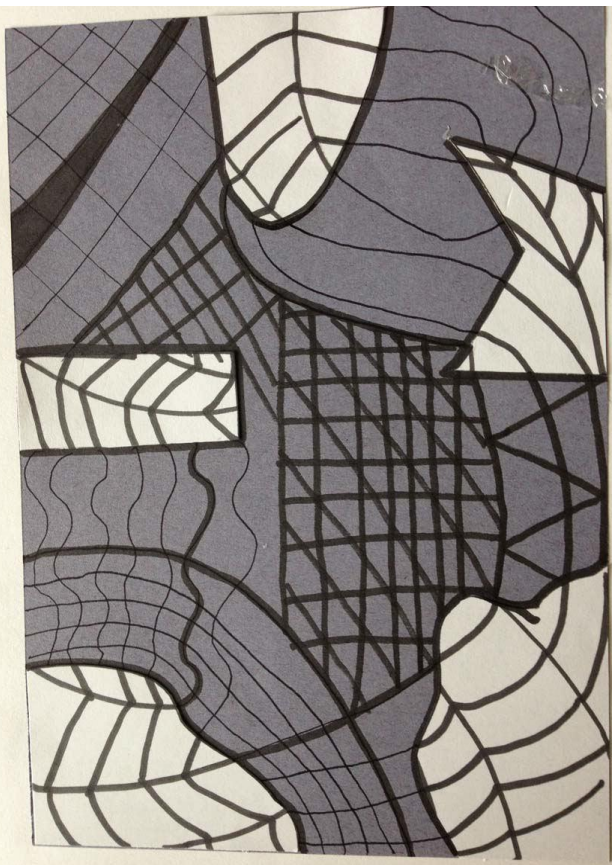


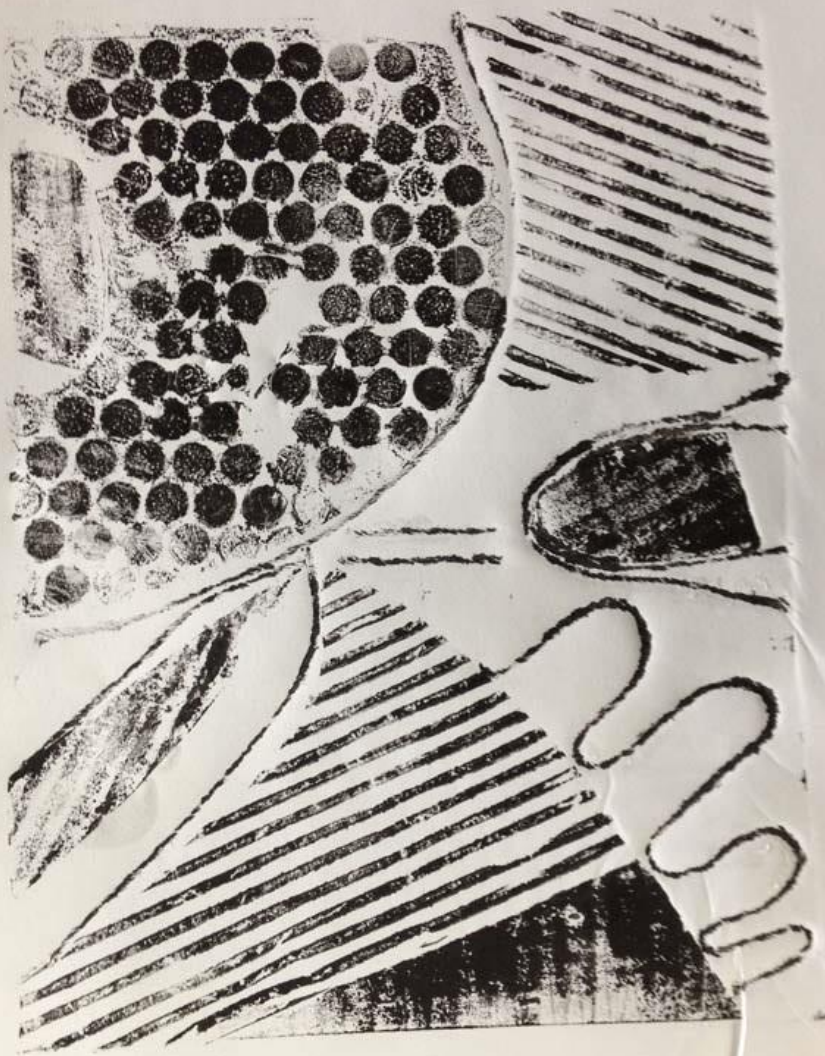












ALEX

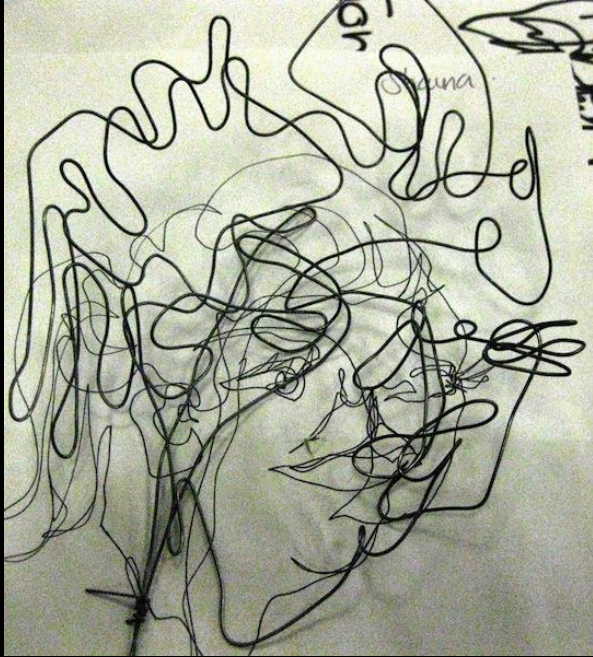
БЛАЖИНА

НПБСЧЛБ





**What do you learn though drawing?**



# students' drawings

Eileen Adams

**TEA:** a programme initiated by The Campaign for Drawing in collaboration with NSEAD and NADFAS